

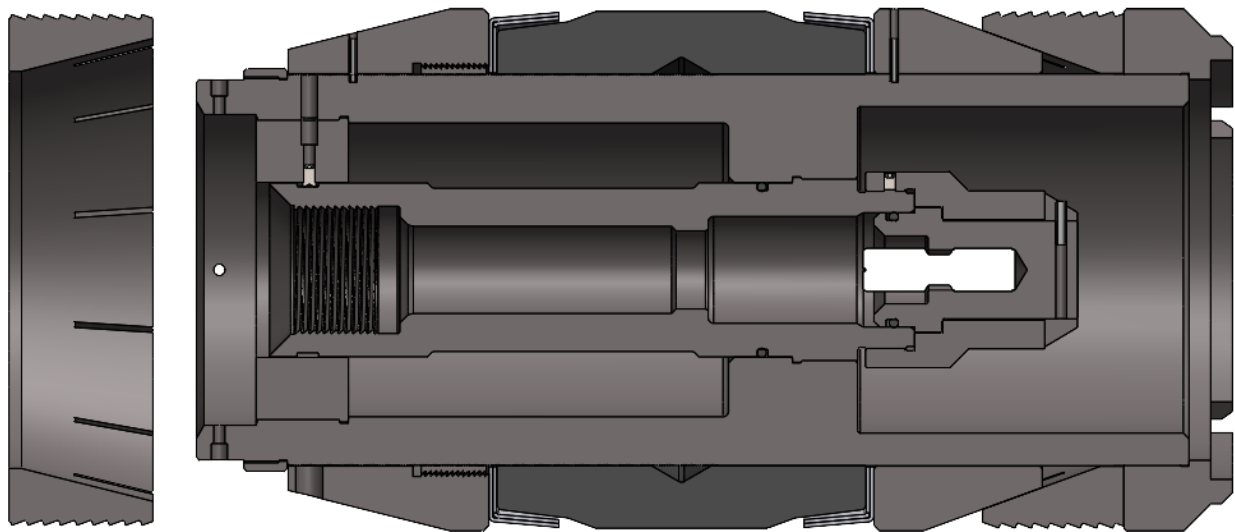
Document #	TU-B1-BP
Revision	1
Date	2/27/2026
Author	Omar Perdomo
Approved By:	Carl Gay

## ALPHA B-1 Bridge Plug

Introducing the B-1 Bridge Plug: a top-tier solution offering cost-effective temporary zone isolation for treatments. Designed for versatility, the B-1 plug can be set mechanically or via wireline. With robust construction, the B-1 Bridge Plug maintains integrity under high pressures and temperatures, ensuring reliable performance in demanding environments.

### Features:

- Mechanical set. (Part Number: 005-XXXX-001)
- Wireline set. (Part Number: 005-XXXX-003)
- Drillable Cast Iron construction.
- Sets in any grade casing including P-110.
- Form fitting metal back-ups prevent rubber extrusion.
- For permanent service.
- Ratcheting lock ring holds setting force.
- Can be upgraded to 400°F temperature rating upon request.
- Available sizes for setting range from 3.826 to 18.73 in.



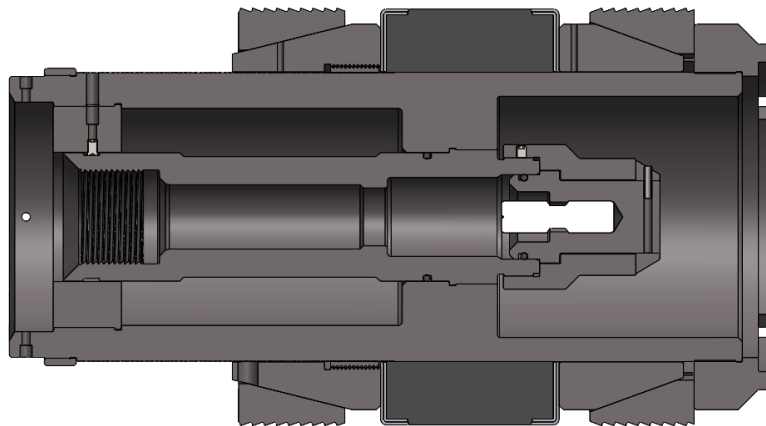
1200 B-1 Bridge Plug Wireline Set  
illustration.

### B-1 BRIDGE PLUG SIZE CHART

Part Number	Plug OD (in)	Setting Range Min (in)	Setting Range Max (in)	Setting Tool	Max Pressure (psi)
005-3593-001	3.593	3.826	4.090	MST 3593	10,000
005-3593-003	3.593	3.826	4.090	#10	10,000
005-3937-001	3.937	4.184	4.560	MST 3.593	10,000
005-3937-003	3.937	4.184	4.560	#20	10,000
005-4312-001	4.312	4.670	5.012	MST 4312	10,000
005-4312-003	4.312	4.670	5.012	#20	10,000
005-5375-001	5.375	5.625	6.094	MST 5687	10,000
005-5375-003	5.375	5.625	6.094	#20	10,000
005-5687-001	5.687	6.004	6.560	MST 5687	10,000
005-5687-003	5.687	6.004	6.560	#20	10,000
005-6312-001	6.312	6.625	7.025	MST 6312	10,000
005-6312-003	6.312	6.625	7.025	#20	10,000
005-7125-001	7.125	7.511	8.097	MST 7125	8,000
005-7125-003	7.125	7.511	8.097	#20	8,000
005-8125-001	8.125	8.535	9.001	MST 8125	8,000
005-8125-003	8.125	8.535	9.001	#20	8,000
005-9000-001	9.000	9.282	9.660	MST 9000	5,000
005-9437-001	9.437	9.660	10.192	MST 9437	5,000
005-9437-003	9.437	9.660	10.192	#20	5,000
005-9937-001	9.937	10.192	10.772	MST 9937	5,000
005-9937-003	9.937	10.192	10.772	#20	5,000
005-1200-001	12.00	12.347	12.715	MST 1200	3,000
005-1200-003	12.00	12.347	12.715	#20	3,000
005-1425-001	14.25	14.688	15.250	MST 1425	2,000
005-1425-003	14.25	14.688	15.250	#20	2,000
005-1725-001	17.25	17.655	18.730	MST 1725	2,000
005-1725-003	17.25	17.655	18.730	#20	2,000

### HOW THE B-1 BRIDGE PLUG WORKS

The B-1 bridge plug is run into wellbore on wireline or tubing to the desired depth. The setting mechanism is triggered, causing the cone to push slips outward to grip the wellbore wall and compress the sealing element to form a tight seal. Once set, the plug isolates the wellbore sections below and above it, preventing fluid flow and pressure communication.

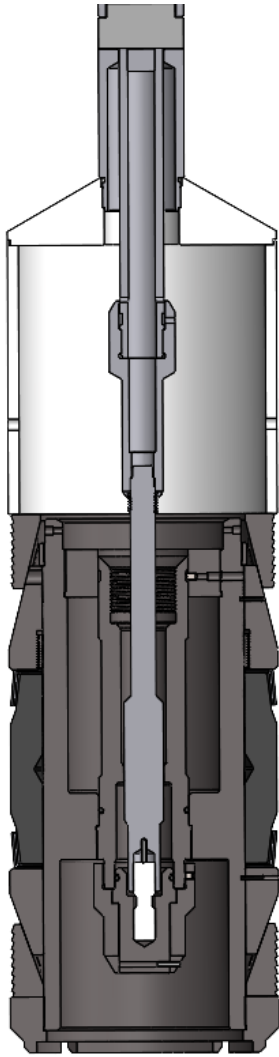


1200 B-1 Bridge Plug (wireline set) in Set Position illustration.

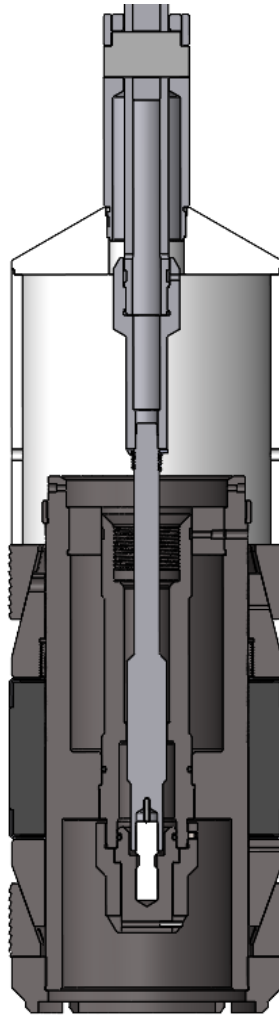
Document #	TU-B1-BP
Revision	1
Date	2/27/2026
Author	Omar Perdomo
Approved By:	Carl Gay

Once the B-1 bridge plug is securely installed and on setting depth, initiate the set via wireline (or hydraulic) setting tool to fracture the stud or rotate to fracture the shear screws (mechanical set) and detach the setting tool from the plug. The slips and the lock ring will ensure that the packing element remains compressed.

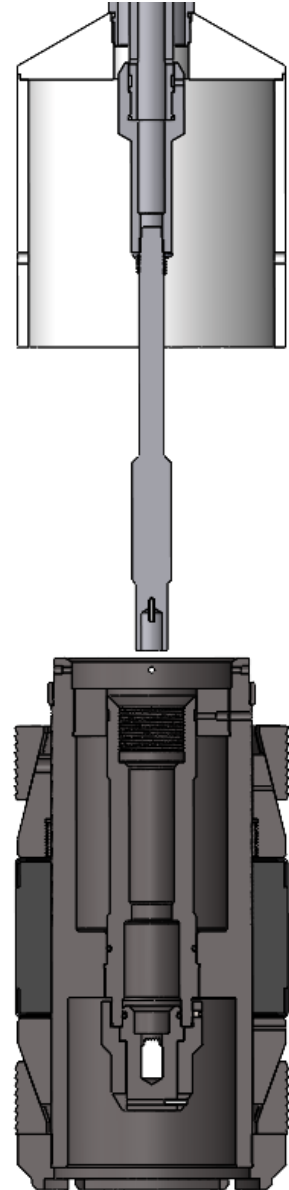
### RUNNING GUIDELINES (wireline set)



RUN IN POSITION



INCREASE PRESSURE  
IN SETTING TOOL TO  
SET BRIDGE PLUG



SHEAR STUD FRACTURES AND  
RELEASES THE SETTING TOOL  
FROM BRIDGE PLUG



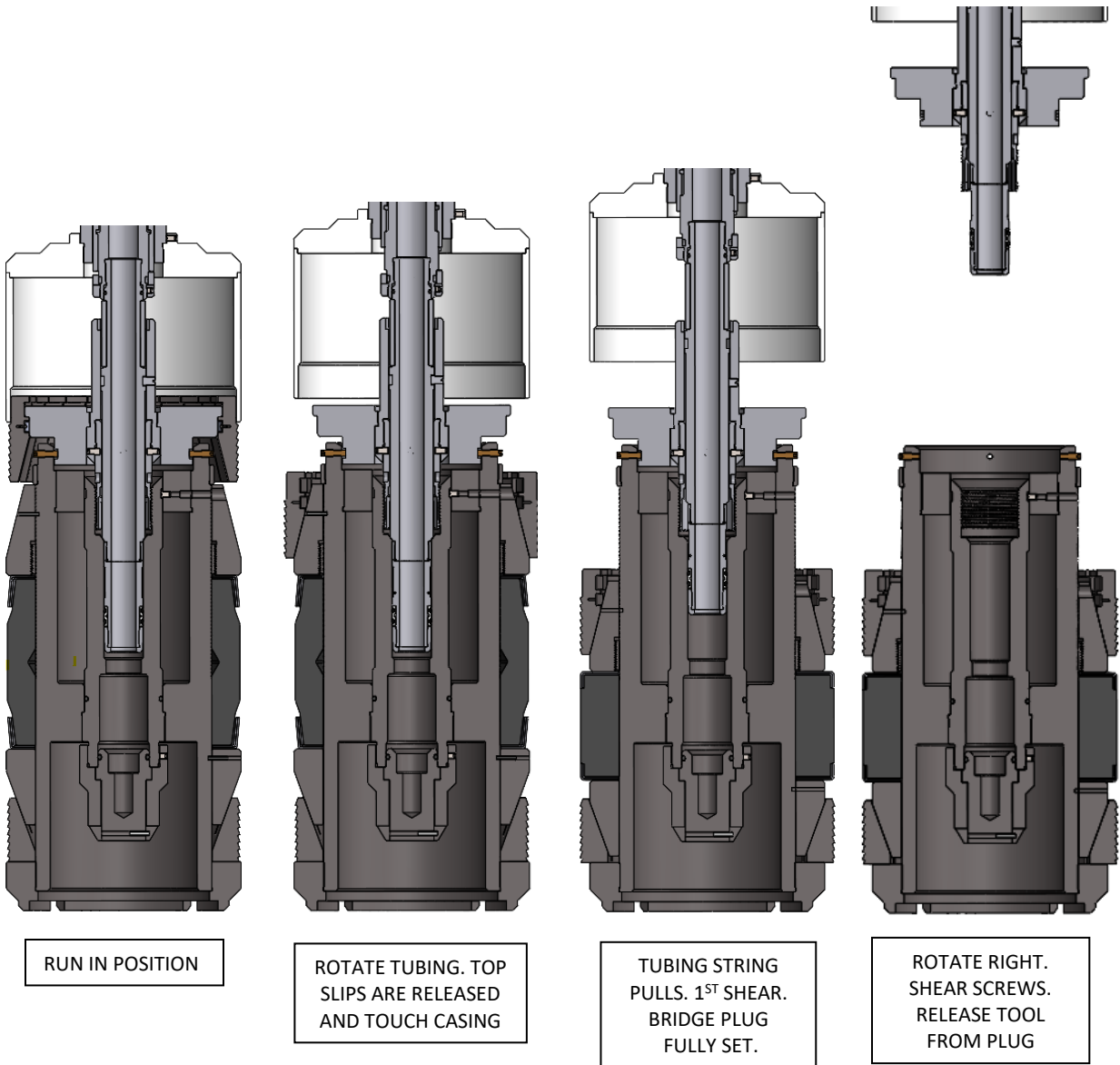
Document #	TU-B1-BP
Revision	1
Date	2/27/2026
Author	Omar Perdomo
Approved By:	Carl Gay

### GUIDELINES FOR RUNNING B-1 BRIDGE PLUG (wireline set)

1. Use casing scraper before running any equipment in the well to remove scale and other materials from the casing wall. Any tool that is expected to grip the casing wall has to first reach the casing wall. Follow scraper with gage ring and junk basket.
2. Always follow cleaning, redressing and operational procedures on the setting tool. Make certain oil levels in pressure setting tool are correct for the well environment involved. Take into consideration the heat expansion of the oil in your manufacturers guidelines that should be supplied with your pressure setting tool.
3. Use the correct bridge plug for the temperature, pressure, casing size, casing weight and environment.
4. Casing should have 100% cement bond before running plug in the well.
5. Do not overtighten bridge plug onto setting tool. This action causes the slips to crack which leads to premature setting. Snug tight is sufficient for a bridge plug. The lock spring or nut, depending on make of setting tool, must accompany the tension mandrel to prevent plug from backing off.
6. Do not allow the setting tool weight to rest on the bridge plug after making up. This can cause the slips to crack.
7. Help guide the setting tool and bridge plug through lubricators, wellhead and blowout preventer. When running under pressure raise tools to the top of lubricator before equalizing the pressure into lubricator.
8. Running speed should not exceed 300 feet per minute to avoid fluid displacement cutting on elastomer. Should setting tool misfire, retrieve equipment no faster than it went in. Slow down for liners and other restrictions.
9. Never set plug in casing collar or where milling has occurred.
10. Always set plugs in static well conditions (no fluid or gas movement).
11. Shock to the plug can result in failure. Warn service companies of the plug depth to avoid high impact collisions. When using the plug for locating purposes, be gentle and ease tools onto plug. Never place tubing weight on plug.
12. Pressure setting tool failure can result from several causes (ex: out of date power charge or bad O-ring). In the event that a pressure setting tool does not shear off of the bridge plug and you have to pull out of the rope socket, the shear stud will still part in a normal manner when the setting tool is fished out. This happens most commonly because the power charge did not put up sufficient pressure to shear the stud in the plug. The Alpha studs are made to shear correctly and are held to high standards of accuracy. When the fishing tool goes in to retrieve the setting tool, you can watch the accuracy of the shear stud when it shears, assuming that the weight indicator is not out of calibration.
13. When perforating, bridge plug should be protected with a minimum of ten feet of cement dumped directly on top of plug. Cement should be given sufficient time to set up before perforating.
14. Perforating should not be done closer than fifty feet of bridge plug.
15. Always remove security roll pin (above top slip) when installing Bridge Plug on the Setting Tool.

Document #	TU-B1-BP
Revision	1
Date	2/27/2026
Author	Omar Perdomo
Approved By:	Carl Gay

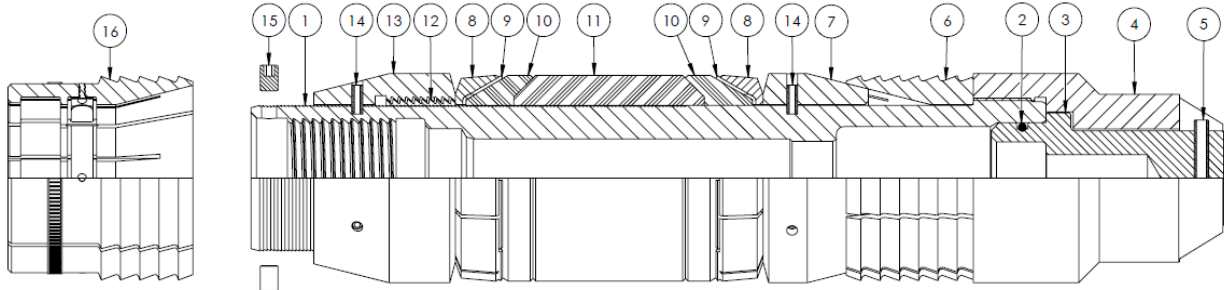
## RUNNING GUIDELINES (mechanical set)



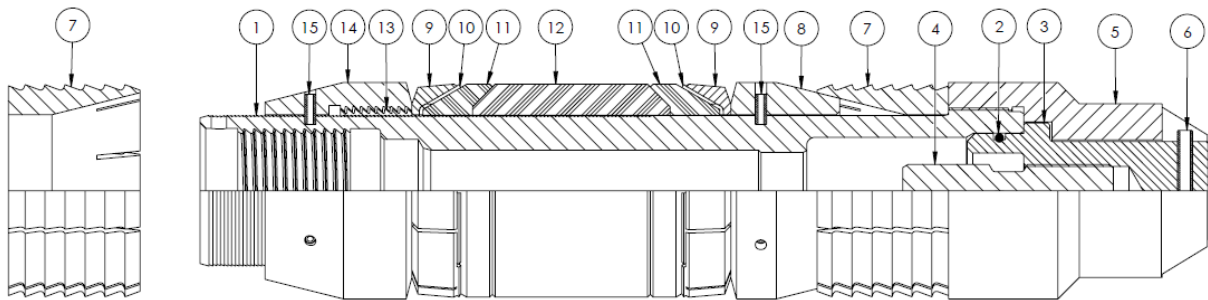
**Refer to the operation procedure section of the mechanical setting tool tech unit for detailed guidelines.**

Document #	TU-B1-BP
Revision	1
Date	2/27/2026
Author	Omar Perdomo
Approved By:	Carl Gay

### B-1 BRIDGE PLUG PARTS LIST



**3.593 B-1 BRIDGE PLUG MECHANICAL SET ILLUSTRATION (005-3593-001)**



**3.593 B-1 BRIDGE PLUG WIRELINE SET ILLUSTRATION (005-3593-003)**

#### 3.593 MECHANICAL SET BOM

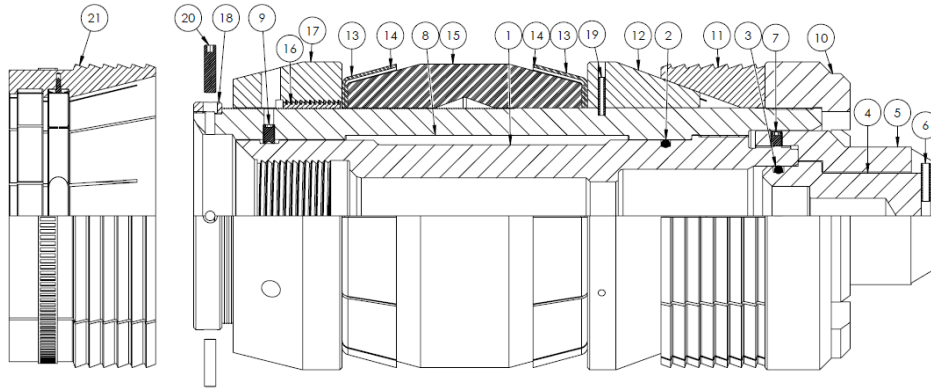
ITEM NO.	PART NUMBER	DESCRIPTION	QTY.
1	005-3593-006	BODY	1
2	000-223N-090	223 O-RING	1
3	005-3593-071	PLUG BODY	1
4	005-3593-070	BRIDGE PLUG SHOE	1
5	RP0250X100	ROLL PIN	1
6	005-3593-011	SLIP	1
7	005-3593-009	BOTTOM CONE	1
8	005-3593-024	OUTER METAL BACK-UP	2
9	005-3593-023	INNER METAL BACK-UP	2
10	005-3593-036	END PACKING ELEMENT	2
11	005-3593-037	CENTER PACKING ELEMENT	1
12	005-3593-013	LOCK RING	1
13	005-3593-008	TOP CONE	1
14	RP0187X500	ROLL PIN	6
15	005-3593-019	TORQUE SCREW	2
16	005-3593-010	MECHANICAL TOP SLIP	1

#### 3.593 WIRELINE SET BOM

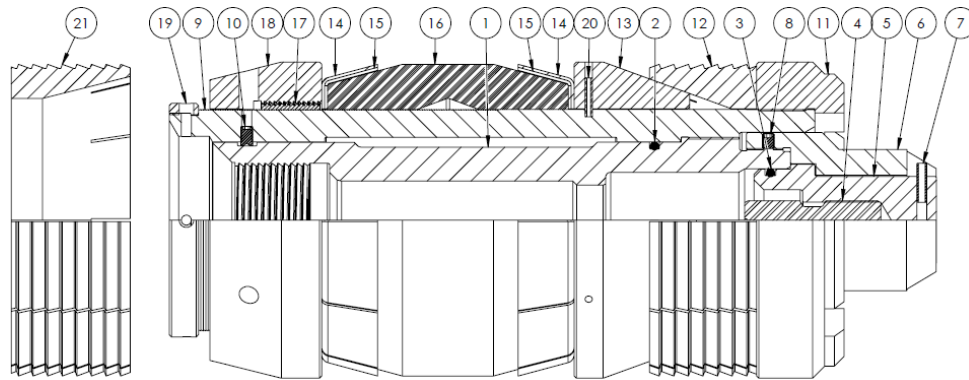
ITEM NO.	PART NUMBER	DESCRIPTION	QTY.
1	005-3593-006	BODY	1
2	000-223N-090	223 O-RING	1
3	005-3593-071	PLUG BODY	1
4	005-3593-072	RELEASE STUD	1
5	005-3593-070	BRIDGE PLUG SHOE	1
6	RP0250X100	ROLL PIN	1
7	005-3593-011	SLIP	2
8	005-3593-009	BOTTOM CONE	1
9	005-3593-024	OUTER METAL BACK-UP	2
10	005-3593-023	INNER METAL BACK-UP	2
11	005-3593-036	END PACKING ELEMENT	2
12	005-3593-037	CENTER PACKING ELEMENT	1
13	005-3593-013	LOCK RING	1
14	005-3593-008	TOP CONE	1
15	RP0187X500	ROLL PIN	6

Models with a size of 8.125 and larger are equipped with both inner and outer body components. Example provided on next page.

Document #	TU-B1-BP
Revision	1
Date	2/27/2026
Author	Omar Perdomo
Approved By:	Carl Gay



**8.125 B-1 BRIDGE PLUG MECHANICAL SET ILLUSTRATION (005-8125-001)**



**8.125 B-1 BRIDGE PLUG WIRELINE SET ILLUSTRATION (005-8125-003)**

**8.125 MECHANICAL SET BOM**

ITEM	PART NUMBER	ALPHAPARTNAME	QTY.
1	005-8125-004	INNER BODY	1
2	000-342N-090	342 O-RING	1
3	000-331-N090	331 O-RING	1
4	005-5687-071	PLUG BODY	1
5	005-8125-070	BRIDGE PLUG SHOE	1
6	RP0250X100	ROLL PIN	1
7	313S18X375	5/16-18 X .375 SET SCREW	1
8	005-8125-006	OUTER BODY	1
9	313S18X500	5/16-18 X .500 SET SCREW,	3
10	005-8125-005	BOTTOM SHOE	1
11	005-8125-016	BOTTOM SLIP	1
12	005-8125-009	BOTTOM CONE	1
13	005-8125-024	OUTER PETAL BACK-UP	2
14	005-8125-023	INNER PETAL BACK-UP	2
15	005-8125-034	PACKING ELEMENT	1
16	000-8710-013	LOCK RING	1
17	005-8125-008	TOP CONE	1
18	005-8125-027	STOP RING	1
19	RP0187X100	ROLL PIN	6
20	005-8125-019	TORQUE SCREW	2
21	005-8125-010	TOP SLIP	1

**8.125 WIRELINE SET BOM**

ITEM	PART NUMBER	PART NAME	QTY.
1	005-8125-004	INNER BODY	1
2	000-342N-090	342 O-RING	1
3	000-331-N090	331 O-RING	1
4	005-5687-014	RELEASE STUD	1
5	005-5687-071	PLUG BODY	1
6	005-8125-070	BRIDGE PLUG SHOE	1
7	RP0250X100	ROLL PIN	1
8	313S18X375	5/16-18 X .375 SET SCREW	1
9	005-8125-006	OUTER BODY	1
10	313S18X500	5/16-18 X .500 SET SCREW,	3
11	005-8125-005	BOTTOM SHOE	1
12	005-8125-016	BOTTOM SLIP	1
13	005-8125-009	BOTTOM CONE	1
14	005-8125-024	OUTER PETAL BACK-UP	2
15	005-8125-023	INNER PETAL BACK-UP	2
16	005-8125-034	PACKING ELEMENT	1
17	000-8710-013	LOCK RING	1
18	005-8125-008	TOP CONE	1
19	005-8125-027	STOP RING	1
20	RP0187X100	ROLL PIN	6
21	005-8125-011	SLIP	1

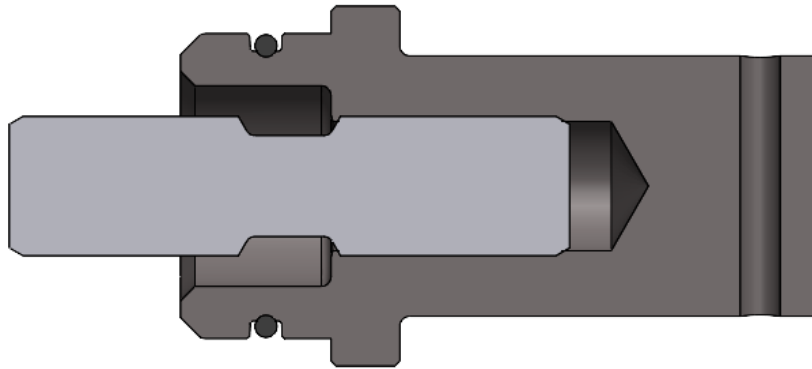
Document #	TU-B1-BP
Revision	1
Date	2/27/2026
Author	Omar Perdomo
Approved By:	Carl Gay

### **ASSEMBLY INSTRUCTIONS FOR B-1 BRIDGE PLUG (3.593-7.125 sizes)**

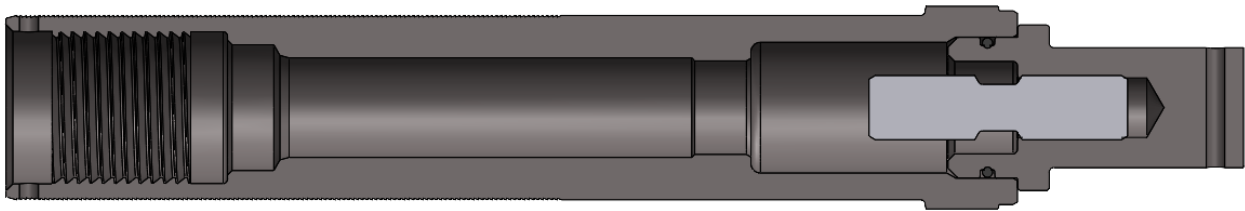
Copper Anti-Seize compound should be used on all threads. Mobil XHP™ 222 Grease should be used on all O-rings, ID of the packing element, ID of cones and ID of slips. To avoid damage to parts, use a soft jaw vise and strap wrenches when tightening connections. Wrench on knurled areas or utilize spanner holes. File away wrench marks.

**NOTES:**

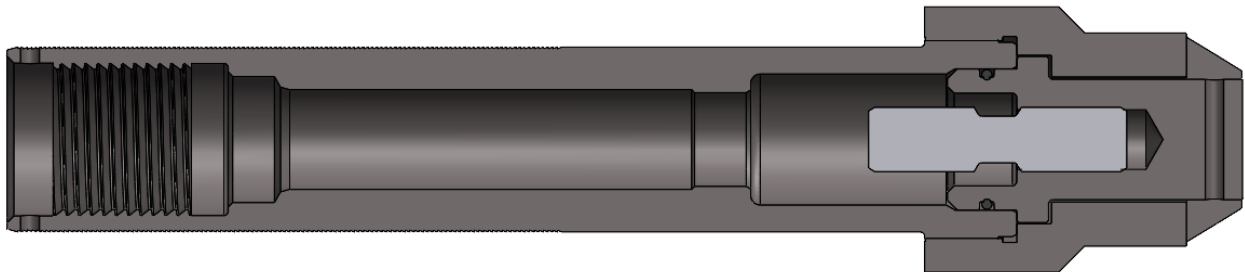
- Spanner wrench tight means hand tight then striking spanner handle with rubber mallet two or three times.
  - Wrench tight means putting your weight on the end of a 36" pipe wrench.
  - Screwdriver tight means hand tight with a medium blade 6" long screwdriver.
1. Place O-ring (item 2) on Plug Body (item 3).
  2. Place Release Stud (item 4) inside Plug Body (item 3) making sure to leave the unthreaded center segment exposed (for wireline set only).



3. Place the Plug Body (item 3) inside the bottom end of the Body (item 1).

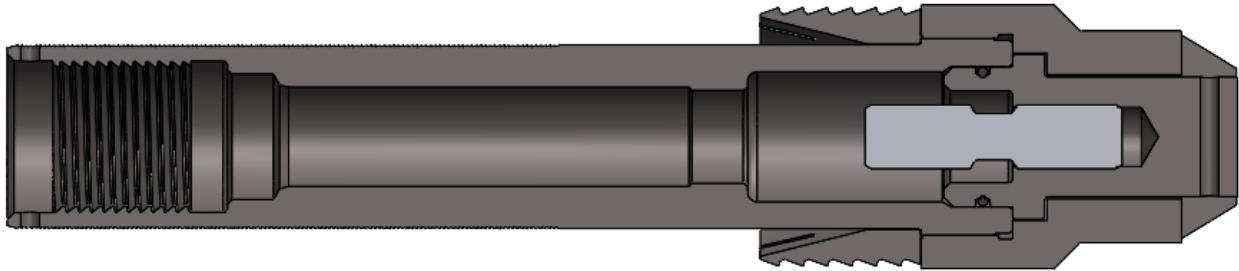


4. Thread the Bridge Plug Shoe (item 5) onto the Body (item 1).

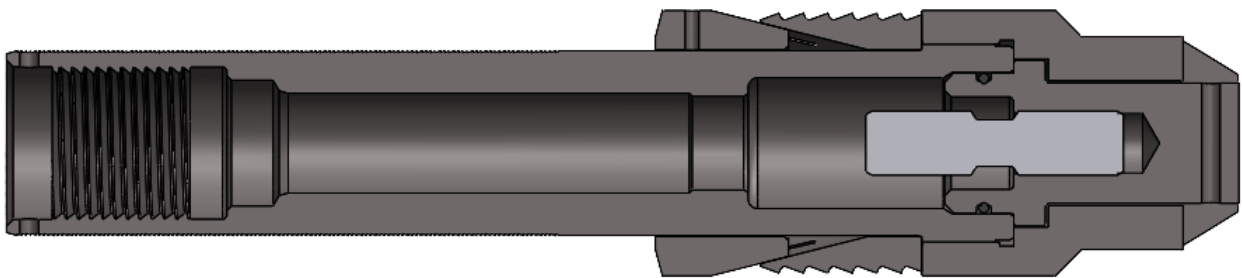


Document #	TU-B1-BP
Revision	1
Date	2/27/2026
Author	Omar Perdomo
Approved By:	Carl Gay

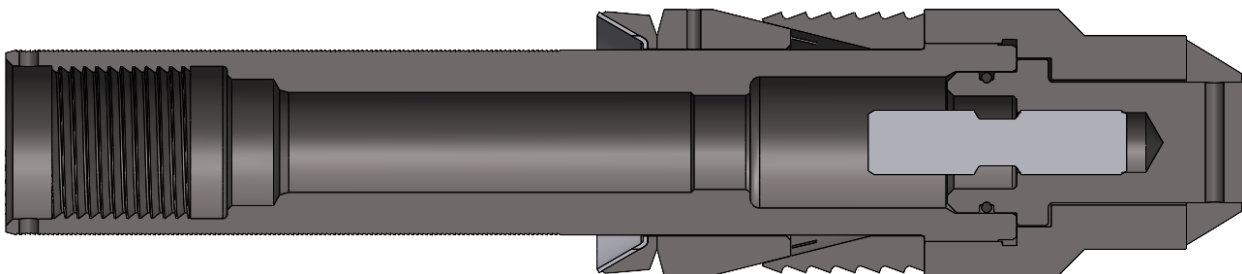
5. Install Bottom Slip (item 7) sliding it thru the body and making sure in touches the Shoe (item 5).



6. Install Bottom Cone (item 8) sliding it thru the body and making sure in touches the Slip (item 7).

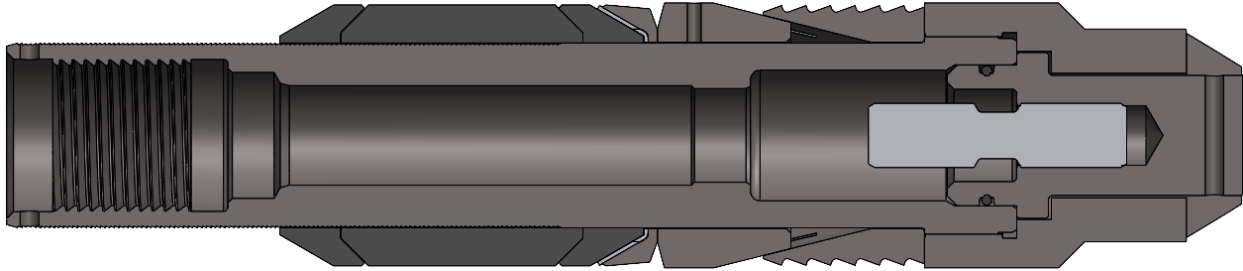


7. Glue/weld together 2 sets of Back-up Rings (item 9 & 10) using epoxy glue. **Ensure that the slots on the inner backup ring are properly centered and offset relative to the slots on the outer backup ring.**
8. Slide one set of Back Up Rings (item 9 & 10) across the body and make sure it contacts with Bottom Cone (item 8).

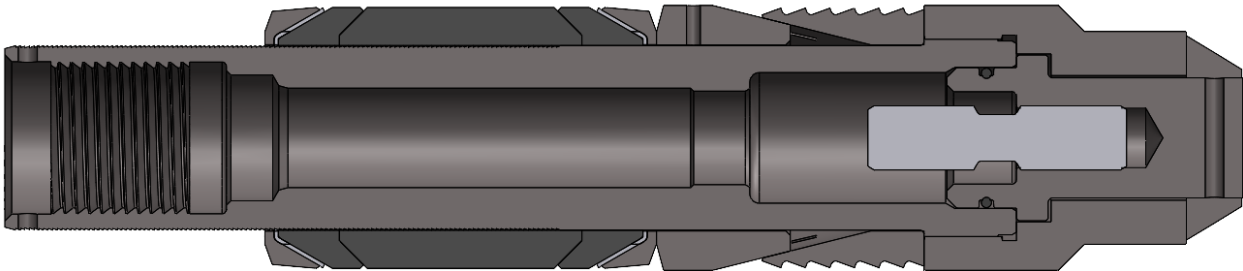


Document #	TU-B1-BP
Revision	1
Date	2/27/2026
Author	Omar Perdomo
Approved By:	Carl Gay

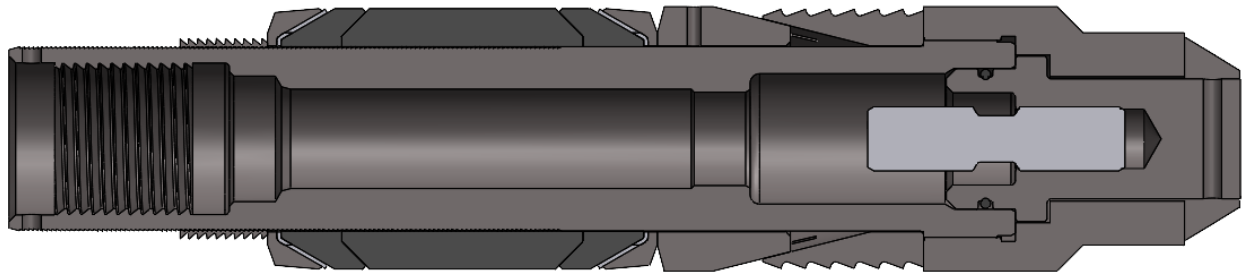
9. Lubricate ID of Packing Element (item 11 & 12) and slide across the Body (item 1) and make sure it contacts with Bottom set of Back-up Rings (item 10 & 11).



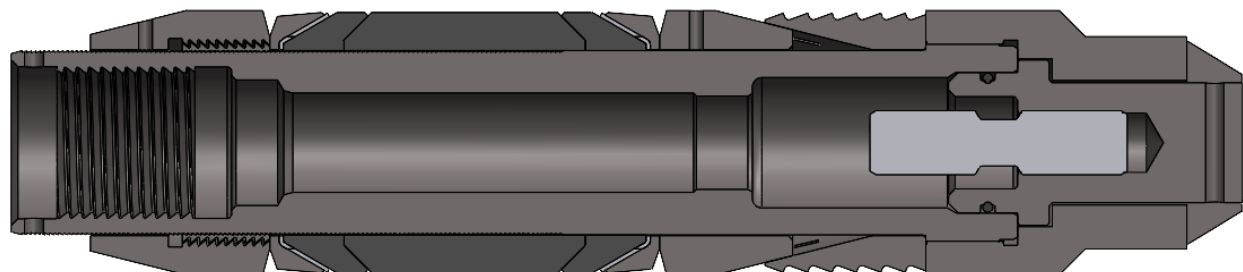
10. Install second set of Back-up Rings (item 9 & 10).



11. Apply Anti-seize compound on Lock Ring (item 13) and thread it onto the Body and make sure it gets 1/8 inch apart with the second set of Back-up Rings.

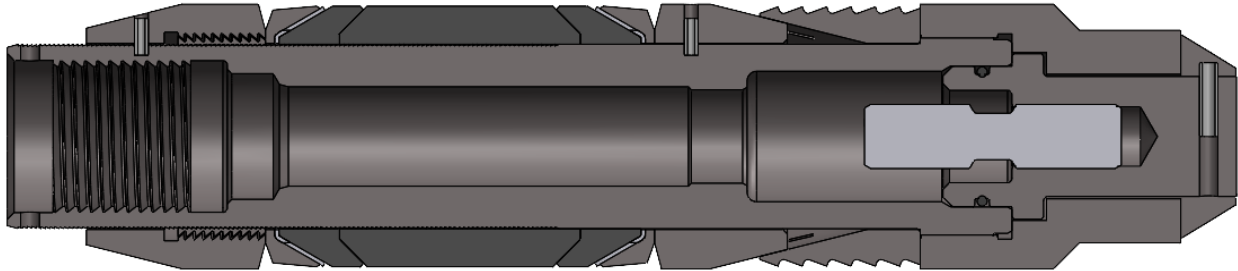


12. Install the Top Cone (item 14) across the Body making sure it contacts with the second set of Back-up Rings.

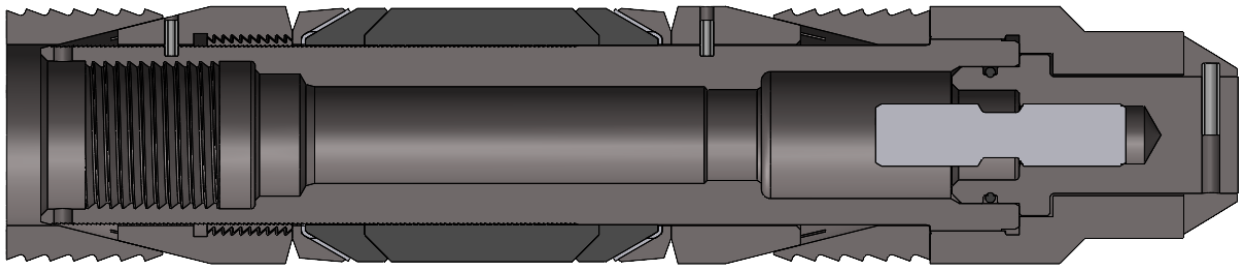


Document #	TU-B1-BP
Revision	1
Date	2/27/2026
Author	Omar Perdomo
Approved By:	Carl Gay

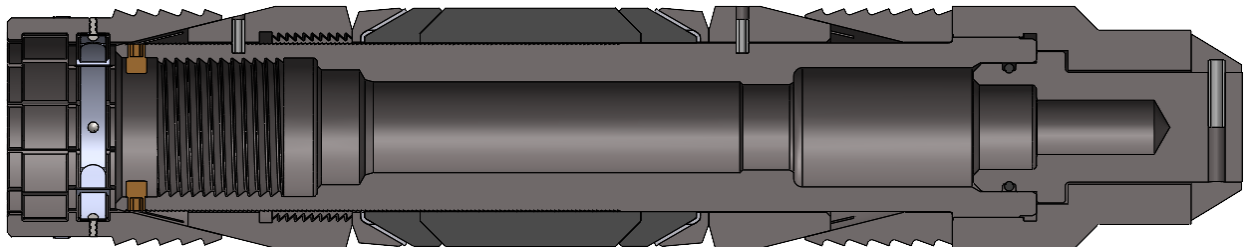
13. Drill .19 deep holes into the Body thru the existing holes on the cones and install Roll Pins (item 15). Install Roll Pin (item 6) in Plug Body (3).



14. Install Top Slip (item 7).



15. For mechanical set B-1 bridge plug include torque screws (item 15) and mechanical Top Slip (item 16) instead of Wireline Top Slip. Release Stud is not part of the mechanical set B-1 Bridge Plug.



Document #	TU-B1-BP
Revision	1
Date	2/27/2026
Author	Omar Perdomo
Approved By:	Carl Gay

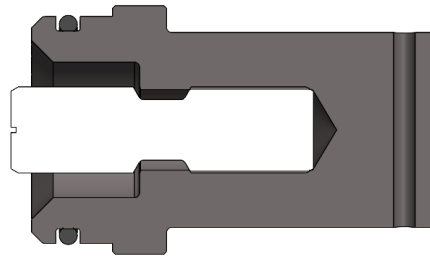
**ASSEMBLY INSTRUCTIONS FOR B-1 BRIDGE PLUG (8.125 - 14.25 sizes)**

Copper Anti-Seize compound should be used on all threads. Mobil XHP™ 222 Grease should be used on all O-rings, ID of the packing element, ID of cones and ID of slips. To avoid damage to parts, use a soft jaw vise and strap wrenches when tightening connections. Wrench on knurled areas or utilize spanner holes. File away wrench marks.

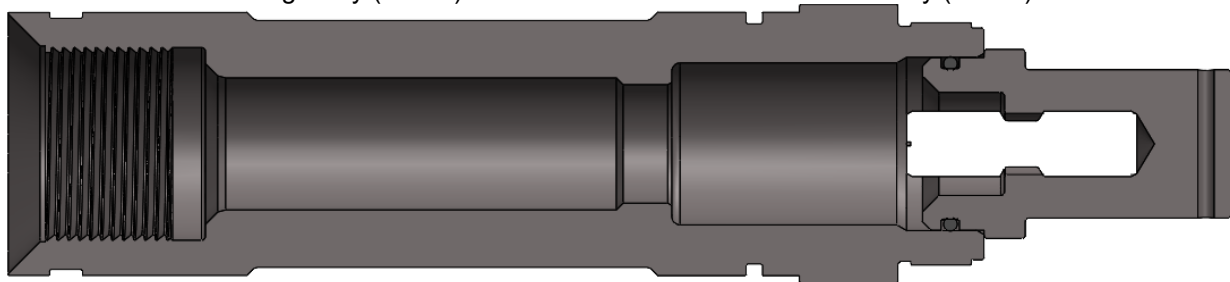
**NOTES:**

- Spanner wrench tight means hand tight then striking spanner handle with rubber mallet two or three times.
- Wrench tight means putting your weight on the end of a 36" pipe wrench.
- Screwdriver tight means hand tight with a medium blade 6" long screwdriver.

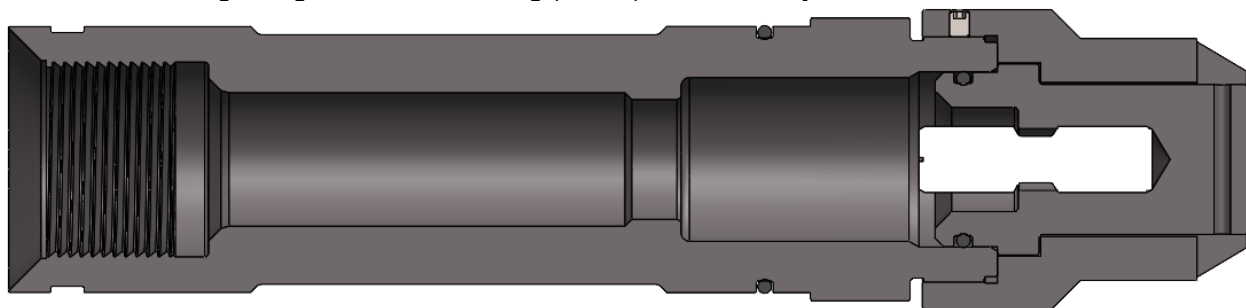
1. Place O-ring (item 3) on Plug Body (item 5).
2. Place Release Stud (item 4) inside Plug Body (item 5) making sure to leave the unthreaded center segment exposed (for wireline set only).



3. Place the Plug Body (item 5) inside the bottom end of the Inner Body (item 1).

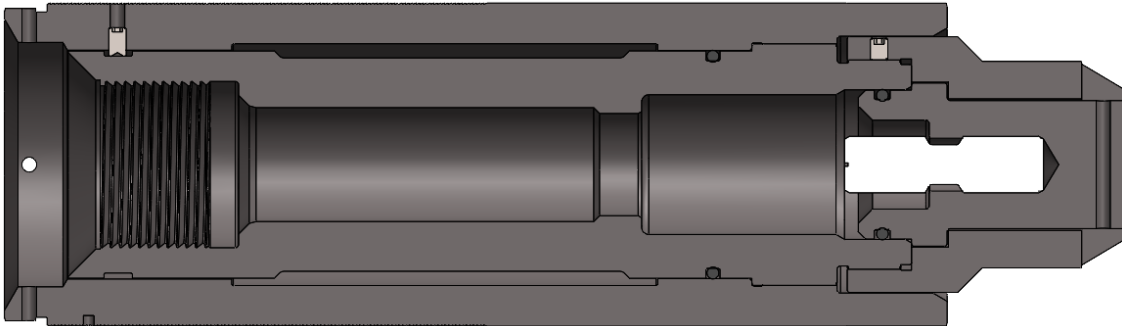


4. Thread the Bridge Plug Shoe (item 6) onto the Inner Body (item 1). Install Set Screw (item 8) on Bridge Plug Shoe. Install O-ring (item 2) on Inner Body.

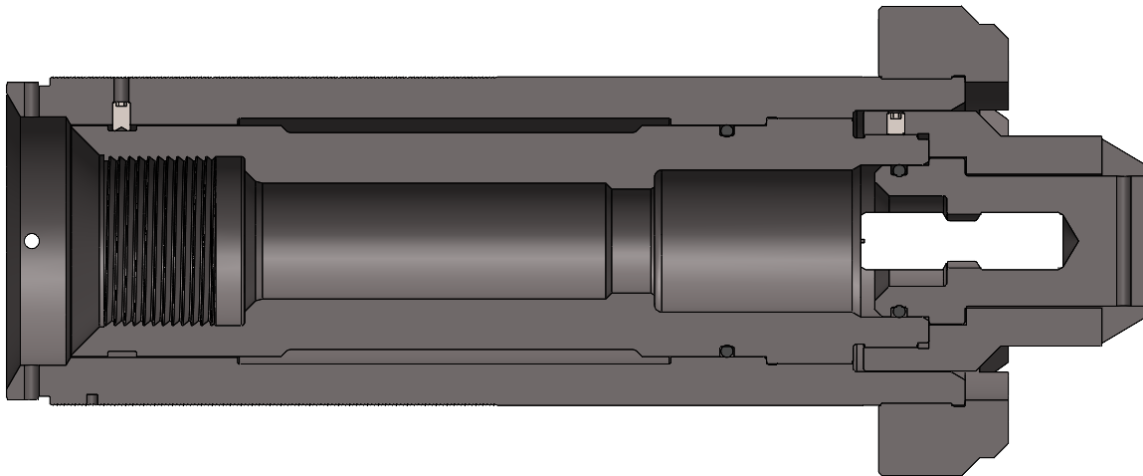


Document #	TU-B1-BP
Revision	1
Date	2/27/2026
Author	Omar Perdomo
Approved By:	Carl Gay

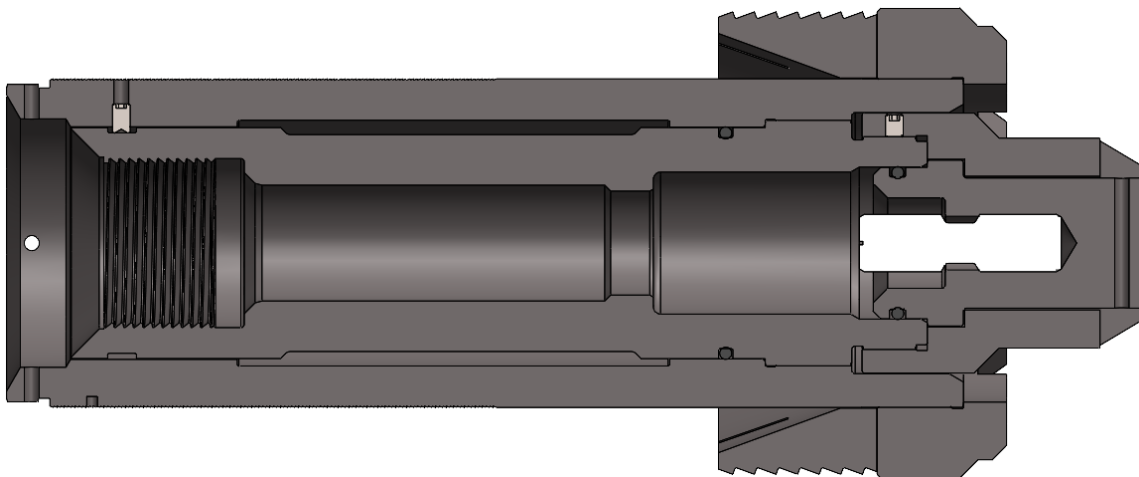
5. Install Outer Body (item 9) on Inner Body (item 1) and secure it with Set Screws (item 10).



6. Install Bottom Shoe (item 11) on Outer Body (item 9).

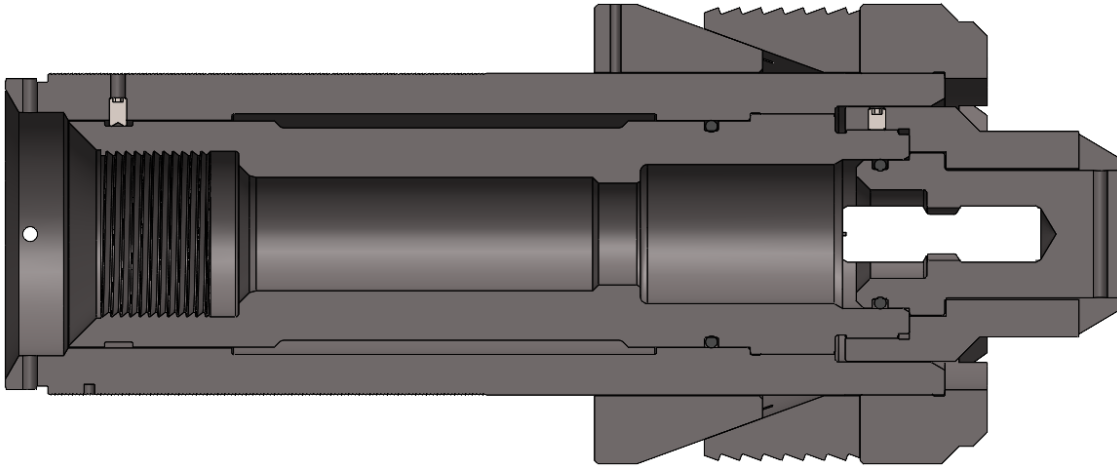


7. Install Bottom Slip (item 12) sliding it thru the Outer Body and making sure it touches the Shoe (item 11).

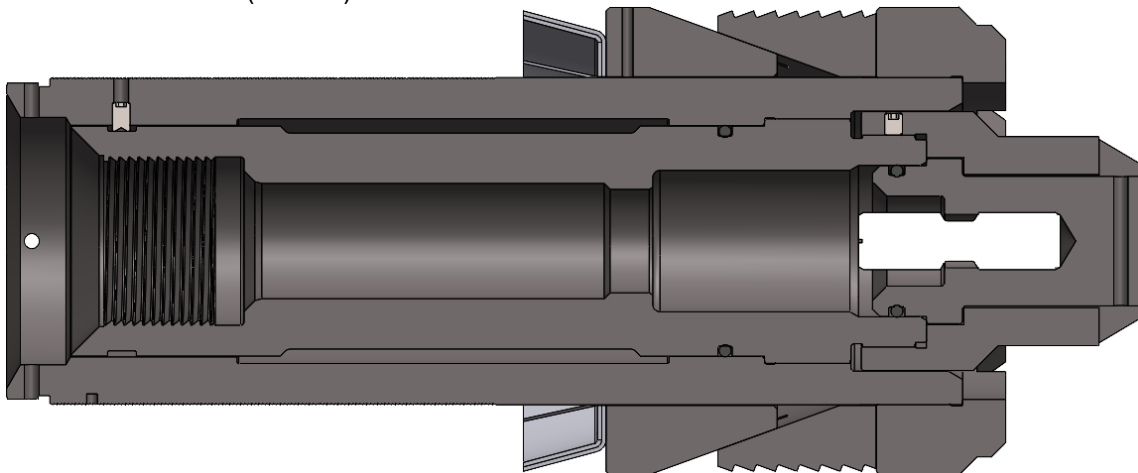


Document #	TU-B1-BP
Revision	1
Date	2/27/2026
Author	Omar Perdomo
Approved By:	Carl Gay

8. Install Bottom Cone (item 13) sliding it thru the Outer Body and making sure it touches the Slip (item 12).

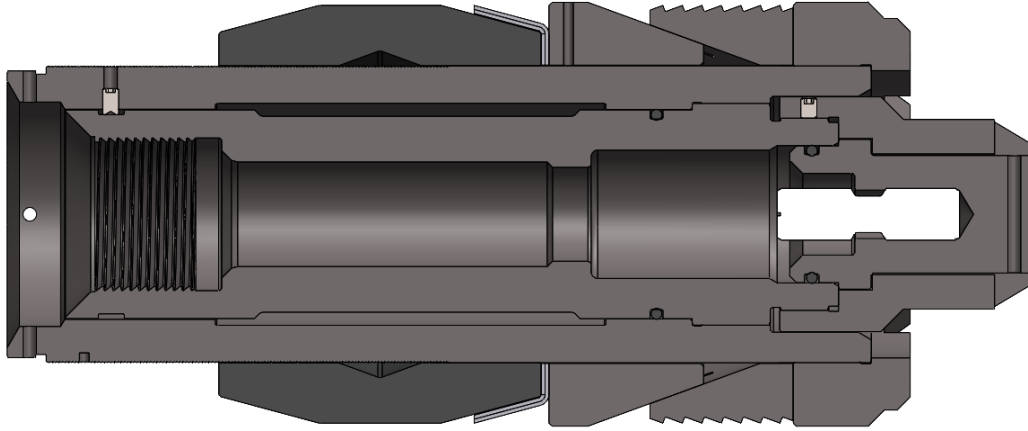


9. Glue/weld together 2 sets of Back-up Rings (item 14 & 15) using epoxy glue. **Ensure that the slots on the inner backup ring are properly centered and offset relative to the slots on the outer backup ring.**
10. Slide one set of Back Up Rings (item 14 & 15) across the body and make sure it contacts with Bottom Cone (item 13).

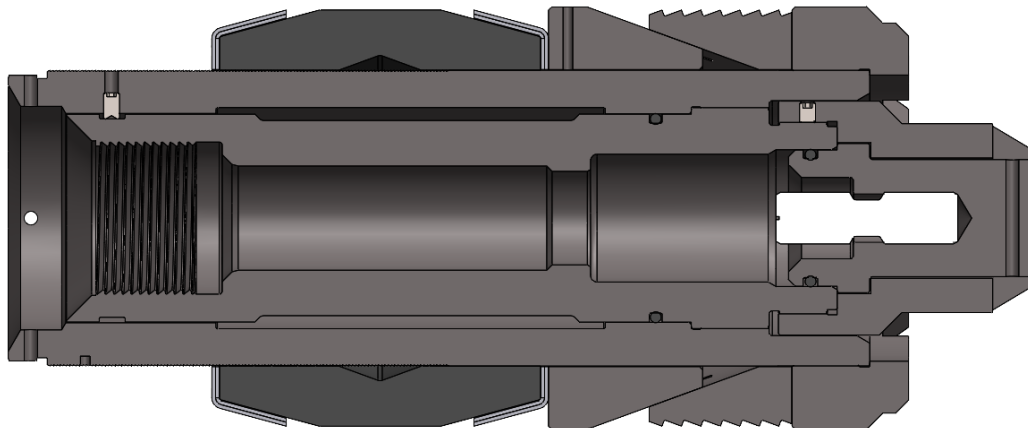


Document #	TU-B1-BP
Revision	1
Date	2/27/2026
Author	Omar Perdomo
Approved By:	Carl Gay

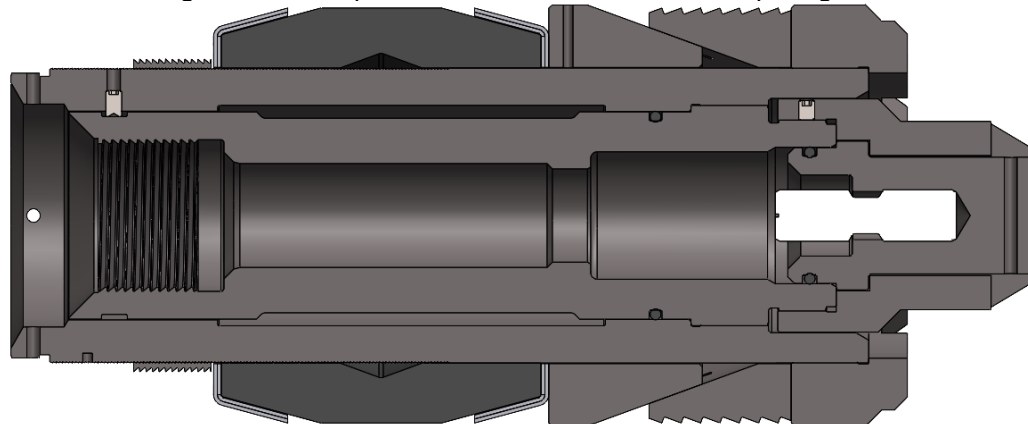
11. Lubricate ID of Packing Element (item 16) and slide across the Outer Body (item 9) and make sure it contacts with Bottom set of Back-up Rings (item 14 & 15).



12. Install second set of Back-up Rings (item 14 & 15).

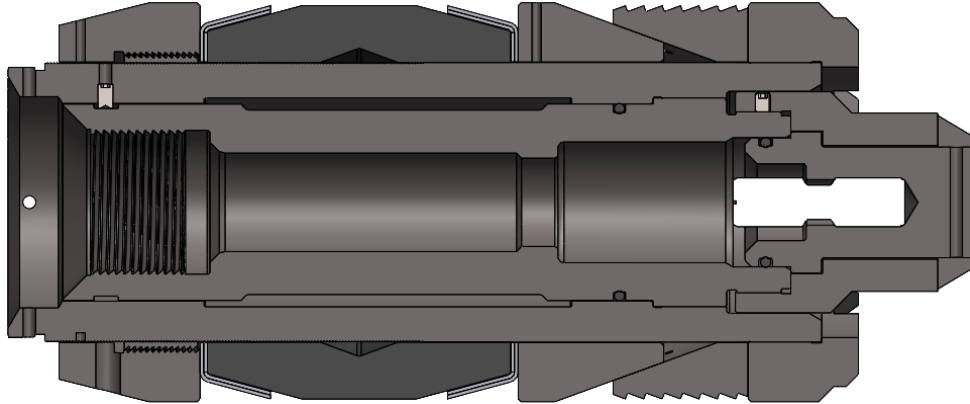


13. Apply Anti-seize compound on Lock Ring (item 17) and thread it onto the Outer Body and make sure it gets 1/8 inch apart with the second set of Back-up Rings.

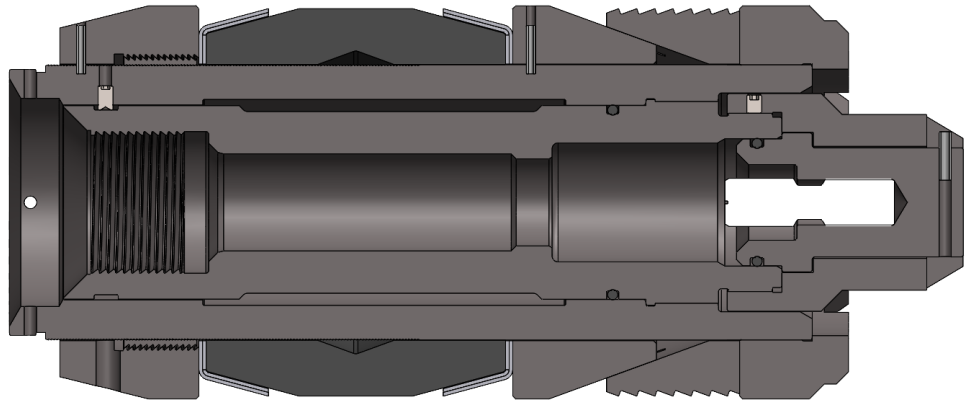


Document #	TU-B1-BP
Revision	1
Date	2/27/2026
Author	Omar Perdomo
Approved By:	Carl Gay

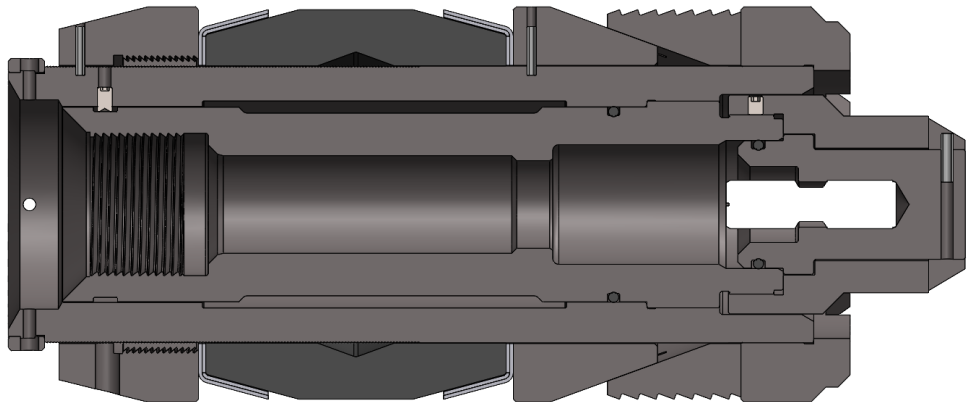
14. Install the Top Cone (item 18) across the Outer Body making sure it contacts with the second set of Back-up Rings.



15. Drill .19 deep holes into the Body thru the existing holes on the cones and install Roll Pins (item 20). Install Roll Pin (item 7) in Plug Body (5).

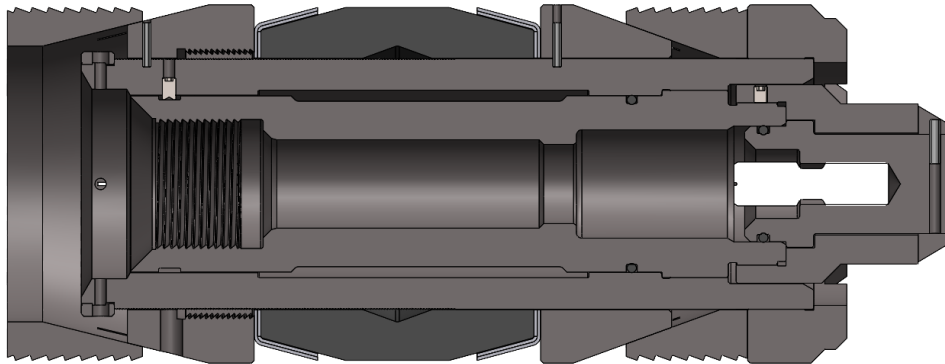


16. Thread Stop Ring (item 19) on Outer Body (item 9) making sure holes on both parts are concentric.

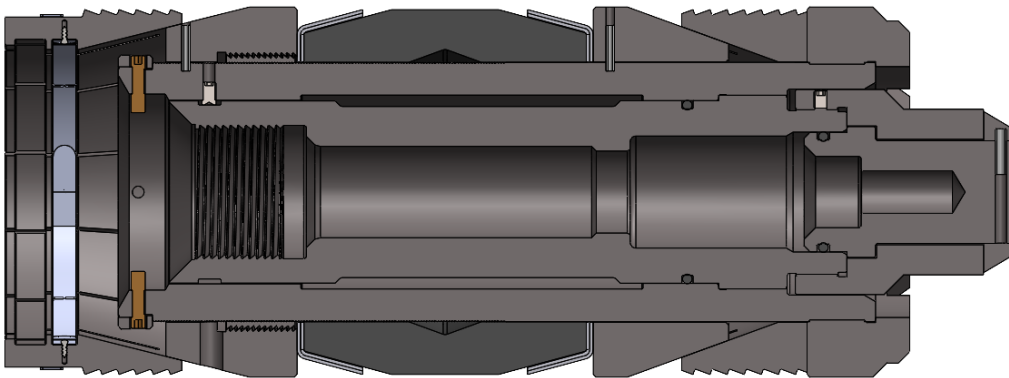


Document #	TU-B1-BP
Revision	1
Date	2/27/2026
Author	Omar Perdomo
Approved By:	Carl Gay

17. Install Top Slip (item 21).

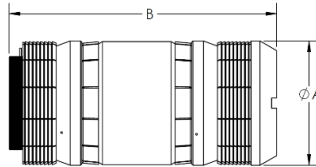


18. For mechanical set B-1 bridge plug include torque screws (item 20) and mechanical Top Slip (item 21) instead of Wireline Top Slip. Release Stud is not part of the mechanical set B-1 Bridge Plug.



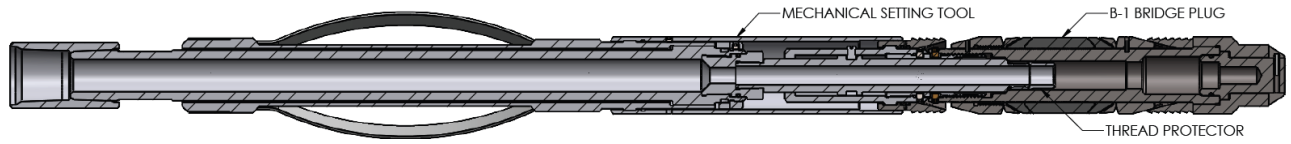
Document #	TU-B1-BP
Revision	1
Date	2/27/2026
Author	Omar Perdomo
Approved By:	Carl Gay

**B-1 BRIDGE PLUG  
DIMENSIONAL DATA**

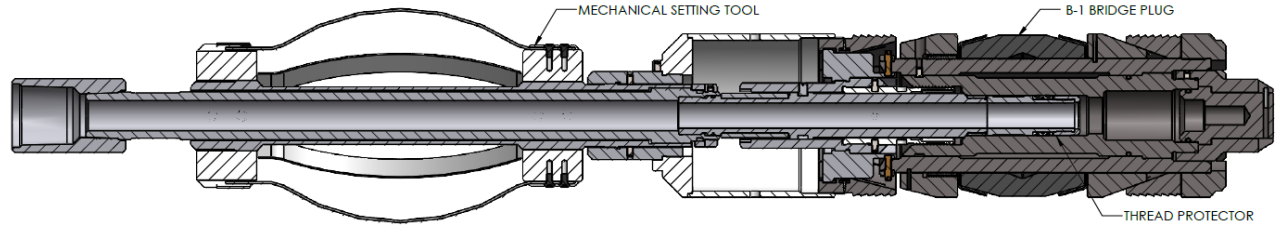


Part Number	Dim. "A"	Dim. "B"	Setting Sleeve	Thread Protector (*)	Shear Stud Value (lbs.)
005-3593-001	3.593	16.75	N/A	017-3593-050	N/A
005-3593-003	3.593	16.75	005-3593-200	N/A	30,000 - 35,000
005-3937-001	3.937	16.75	N/A	017-3593-050	N/A
005-3937-003	3.937	16.75	005-3937-200	N/A	30,000 - 35,000
005-4312-001	4.312	16.75	N/A	017-3593-050	N/A
005-4312-003	4.312	16.75	005-3937-200	N/A	30,000 - 35,000
005-5375-001	5.375	18.91	N/A	017-5687-050	N/A
005-5375-003	5.375	18.91	005-5687-200	N/A	50,000 - 55,000
005-5687-001	5.687	18.91	N/A	017-5687-050	N/A
005-5687-003	5.687	18.91	005-5687-200	N/A	50,000 - 55,000
005-6312-001	6.312	19.00	N/A	017-5687-050	N/A
005-6312-003	6.312	19.00	005-6312-200	N/A	50,000 - 55,000
005-7125-001	7.125	19.00	N/A	017-5687-050	N/A
005-7125-003	7.125	19.00	005-7125-200	N/A	50,000 - 55,000
005-8125-001	8.125	19.72	N/A	017-5687-050	N/A
005-8125-003	8.125	19.72	005-8125-200	N/A	50,000 - 55,000
005-9000-001	9.000	19.72	N/A	017-5687-050	N/A
005-9437-001	9.437	21.88	N/A	017-5687-050	N/A
005-9437-003	9.437	21.88	005-9437-200	N/A	50,000 - 55,000
005-9937-001	9.937	21.88	N/A	017-5687-050	N/A
005-9937-003	9.937	21.88	005-9937-200	N/A	50,000 - 55,000
005-1200-001	12.00	23.84	N/A	017-5687-050	N/A
005-1200-003	12.00	23.84	000-1200-200	N/A	50,000 - 55,000
005-1425-001	14.25	25.50	N/A	017-5687-050	N/A
005-1425-003	14.25	25.50	000-1425-200	N/A	50,000 - 55,000
005-1725-001	17.25	24.07	N/A	017-5687-050	N/A
005-1725-003	17.25	24.07	000-1725-200	N/A	50,000 - 55,000

\*For mechanical set B-1 Bridge Plugs a Thread Protector is needed on Mechanical Setting Tool before installing the plug. **For sizes from 3.593 to 4.312** Shifter Sub, Molded Seal and Seal Sub on the Mechanical Setting Tool needs to be removed and replaced with the Thread Protector. **For sizes from 5.375 to 17.25** Shifter Sub on the Mechanical Setting Tool needs to be removed and replaced with the Thread Protector. Illustration on next page.



3.593 B-1 Mechanical Set Bridge Plug with Mechanical Setting Tool Illustration



8.125 B-1 Mechanical Set Bridge Plug with Mechanical Setting Tool Illustration

**Elastomer Compatibility Guideline Table:**

Elastomer Type	Nitrile (NBR)	Hydrogenated Nitrile (HNBR / HSN)	Viton / Fluoroelastomer (FKM)	Aflas (IFE/P)
Low Temp Resistance, °F	-4	-4	5	100
Maximum Heat Resistance, °F	250	300	350	400
H <sub>2</sub> S	Very Poor (<0.5%)	Poor (<1%)	Fair (<2%)	Very Good (<20%)
CO <sub>2</sub>	Poor (<1%)	Fair (<2%)	Very Good (Unrestricted)	Very Good (Unrestricted)
Amine Inhibitors	Very Poor (Not Recommended)	Very Poor (Not Recommended)	Very Poor (Not Recommended)	Very Good (Unrestricted)
Zn & Ca Bromides	Very Poor (Not Recommended)	Very Poor (Not Recommended)	Very Good (Unrestricted)	Good
Xylene	Very Poor (Not Recommended)	Very Poor (Not Recommended)	Fair	Very Poor (Not Recommended)
HCl & HF Acid	Very Poor (Not Recommended)	Very Poor (Not Recommended)	Fair	Good
Toluene	Very Poor (Not Recommended)	Poor	Fair	Very Poor (Not Recommended)
Sulfuric Acid	Very Poor (Not Recommended)	Poor	Good	Good
Steam	Very Poor (Not Recommended)	Poor	Poor	Poor
Crude Oil	Very Good (Unrestricted)	Very Good (Unrestricted)	Very Good (Unrestricted)	Very Good (Unrestricted)
Methane	Very Good (Unrestricted)	Very Good (Unrestricted)	Very Good (Unrestricted)	Very Good (Unrestricted)
KCl & Salt Water	Very Good (Unrestricted)	Very Good (Unrestricted)	Very Good (Unrestricted)	Very Good (Unrestricted)



Document #	TU-B1-BP
Revision	1
Date	2/27/2026
Author	Omar Perdomo
Approved By:	Carl Gay

## Recommended Drillout/Millout of Cast Iron Bridge Plugs or Cement Retainers

### General

Preferred method is drilling with medium steel tooth tri-cone bit as it is usually faster than mill- out time for same bridge plug or cement retainer. Drilling results in a chiseling effect, where milling is more of a grinding or shaving effect of the targeted tool. Milling out also results in more debris that can hinder penetration as well as circulation to clear the targeted tool face. History has shown that utilizing a short to medium tooth hard formation rock bit to yield the best results.

### Suggested Drilling Techniques

While best methods vary based on equipment, depth of objective, or other factors, Alpha Oil Tools suggests rock bit as suggested above with a rotary speed 75-120 RPM. Use drill collars as required to maintain necessary weight and bit stabilization.

To drill the bridge plug or cement retainer:

1. Apply 5000-7000 pounds until the top end of the retainer/plug mandrel is drilled (4-5 inches).
2. Increase weight to 2000-3000 pounds per inch of bit diameter to complete the drill out. For example, apply 9500 up to 14,250 pounds when using a 4.75-inch bit.

When circulating normally, place a junk basket above the bit. If using reverse circulation, any casing scraper or other equipment above the bit should have an inside fluid passage at least as large as that through the bit so as to allow any/all cuttings to be circulated clear. Utilize varying RPM's and weight on bit to optimize drill out, especially if getting indications that penetration by the bit has slowed or stopped. Loss of penetration may occur by "bit tracking" usually caused by too little weight on the bit. Besides changing weight and RPM's, bit tracking can be overcome by picking up the bit above the retainer, then re-engaging the objective while maintaining same RPM's as before.

Drilling times are directly related to tool size, bit stability, bit type, weight/RPM's on bit, wellbore fluids, and pump rate/pressure. High viscosity fluids combined with high pump rates may result in sufficient hydraulic force and cause the bit to lift off the objective.

### Suggested Milling Technique

If conditions mandate milling be used as the preferred removal method, it is recommended to use a concave junk mill, 60-150 RPM maintaining 5000-8000 pounds on the mill. Use a mud viscosity 60 cps with a minimum annular velocity of 120 ft/min for cuttings removal.

When ready to begin milling, start the mill above the target then slowly lower to the objective. Do not apply excess weight since this can cause "chunking" which will not allow cuttings removal and then slow the millout. If chunking does occur, it will be necessary for a bailer or junk basket to remove chunked debris before milling can resume. A constant milling rate will require added weight as milling progresses.