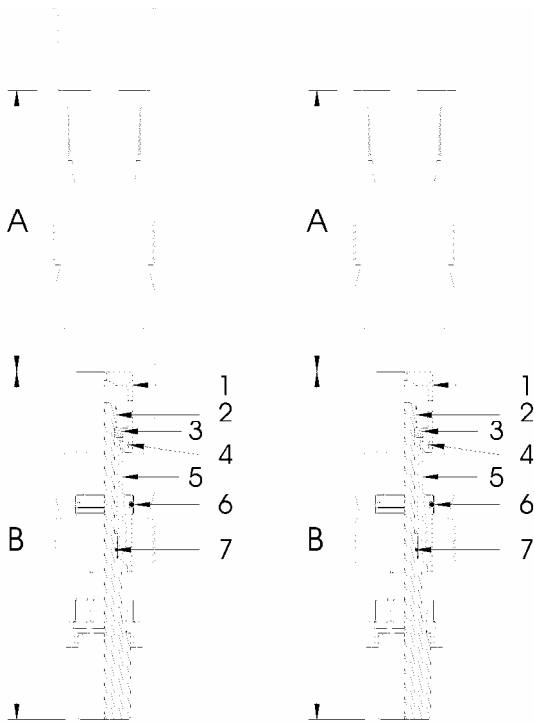


Model B Expendable Plug						
Parts List						
Item	Description	Qty.	Packer Bore Size			
			2.687	3.000	3.250	4.000
-	Assy. Complete - Model B Expendable Plug	-	006-2687-400	006-3000-400	006-3250-400	006-4000-400
1	Latch Release	1	006-2687-415	006-3000-415	006-3250-415	006-4000-415
2	Latch Support	1	006-2687-317	006-3000-317	006-3250-317	006-4000-317
3	Split Retaining Ring - 3 Piece	1	006-2687-416	006-3000-416	006-3250-416	006-4000-416
4	Brass Shear Screw - 2,000 lb.	2	003-3500-019	003-3500-019	003-3500-019	003-3500-019
5	Latch Mandrel	1	006-2687-418	006-3000-418	006-3250-418	006-4000-418
6	O-Ring	1	100-2331-090N	100-2334-090N	100-2336-090N	100-2342-090N
7	O-Ring	1	100-2214-090N	100-2216-090N	100-2221-090N	100-2328-090N

Dimensional Data for use with Model J Packer									
Item	Packer Size								
	37-26	39-26	43-26	45-26	49-30	56-32	61-32	81-32	81-40
A	12.625	12.625	13.875	13.875	13.875	19.656	19.656	20.625	20.344
B	16.218	16.218	16.218	16.218	16.218	16.218	16.218	16.218	16.218

Dimensional Data for use with Model L Packer									
Item	Packer Size								
	44-30	45-30	47-30	56-40	58-40	60-40	62-40		
A	13.875	13.875	13.875	16.468	16.468	16.468	16.468		
B	16.218	16.218	16.218	16.750	16.750	16.750	16.750		

Installation:



Model B Expendable Plug Installed In Model J Packer

Model B Expendable Plug Installed In Model L Packer

1. To prevent mud or trash particles from becoming trapped between packer bore and the plug, grease the top end of plug liberally.
2. If packer shoe is not removed from the packer, do so.
3. Insert the expendable plug into packer bore until it bottoms.
4. Re-install the packer shoe.

Caution:

The maximum pressure differential that can be placed across the expendable plug is 7,500 psi.

Operation:

The expendable plug can normally be pushed from the plug with approximately 3,000 to 4,000 lbs. of set down weight. If possible the well should be circulated while the production tube is being lowered into the packer bore to prevent interference from foreign matter.